

Welcome

President Jay Stearns welcomed everyone to the March meeting.



Chris Kersey says a Powermatic dual drum sander will be auctioned off with the proceeds going to charity. He is to provide further details.

Wally Schlaegel gave an update on the Haiti program he is involved in. The program keeps growing and they are now building beds. They can still use any tool donations – both battery and corded.

Nello Armstrong is selling his old midi-lathe after winning the new Nova lathe at the December potluck.

Announcements

Dale Smith reported that the carver's show was well attended and that they are adding a new judging category in 2020 for bandsawn boxes. Larry Maughan received two blue ribbons, Jay Stearns received one and Dale received the Outstanding Carver-of-the-Year Award.

Robert Stable has two pallets of wood: walnut, mahogany, tiger maple and mesquite that he wants to get rid of by the end of March. Jay is organizing a way to pick it up and distribute it free to members.

Bill Bush has organized a sale for Pam Henderson's husband's equipment, wood, tools and many other items for Saturday March 30th. Pricing will be done on Friday afternoon and volunteers are welcome.

The next challenge project will be Beads of Courage boxes. Steve Yauch is to get more details and possibly secure a speaker for April.

Elections and DUES

April will not only bring showers for the May flowers, but it brings the NTWA annual elections and dues renewal. Volunteers are being sought to serve in the various officer capacities. Please contact President Jay Stearns or VP Steve Yauch if you'd like to step up.

Dues renewals are also being collected at the April meeting. Annual dues will remain at \$36.00. Bring your cash or check for Ed to get your new membership card. Remember your membership card gives you a 10% discount at Woodcraft and Rockler for many items.

Shop Questions

A member has a stainless-steel knife that the handle broke and while trying to drill the knife for a new handle, the knife bent. Gary Turman will work with him on how to fix it.

Show & Tell



Joe Polich made two table to match the glider he showed off at the February meeting. The tops are straight grained western red cedar and the legs are left overs from the beams he milled from the front of his house.



Jim Polanco made this mortar and pestle out of purple heart. He struggled at first trying to keep the purple heart color after turning, but advises that if you just let the purple heart sit for a week or so, it returns to its natural color.



Gary Barnes made chairs for his dining table set out of African mahogany. The leg joints are mortise and tenon.



Bill Jacobs has already gotten started on this year's Christmas ornament gifts. Using his scroll saw, he's made 106 of these manger ornaments out of bodark.



Michael Petrana made this votive candle stand joining the individual blocks using resin mixed with mica powder.

complete with a curtain and folds up to make storage easier.



Jay Stearns shocked the group with this amazing bandsawn popup. He started by holding the log level then quickly raising and then lowering the log to popup the center. You could have heard a pin drop for a few seconds. Amazing and very cool! Now if he could just figure out a way to put drawers in the popups.....



Dave Francis made this stage for his granddaughter's dolls. The stage is



Ed Mastin made these earrings to give his wife for Valentine's Day.



Sidney Futrell made several drawers out of white oak for the cabinet he

made to hold his hand planes. The joints are handcut dovetails of course!

And the winner of the \$10 Show & Tell drawing was **Jay Stearns**.

Guests

Ed Caballero moved from Houston to Wylie three years ago. He's just getting back into woodworking and his favorite wood is oak.

Jay Weinstein was a member about 20 years ago. He mostly builds furniture but is now getting more into reclaimed wood such as pallets.

Matt Horseman lives in Plano and likes to make mesquite furniture. He has a shop in Sherman.

Roger Cramer is from Farmer's Branch and just likes to make sawdust. He discovered NTWA at the recent Carver's Show.

Peter Smith is in the process of moving to Corinth. He like to collect antique tools – both hand and power. His favorite wood is mahogany. He has added turning to his repertoire.

Raffle

Sidney Futrell: WoodRiver Oscillating Spindle sander donated by the Plano Woodcraft Store.

Bill Jacobs: Limited edition Bridge City CT-2 Square/Level/Bevel gauge.

Wendell Brough: FastCap 12' Metric/Fractional tape measure donated by Greg Merrell.

Gary Turman: Japanese 45° miter square parallelogram.

Program

There were two programs for the March meeting. First up was Lloyd Plum who has a Woodmizer LT15Wide sawmill. Lloyd works the sawmill part time out of his home east of Plano. He mills live edge slabs for his own use and sells some to furniture makers. He occasionally does custom milling for customers but says he doesn't cut much dimensioned lumber because it's not cost effective at his scale.



Lloyd got started in woodworking after his grandfather passed away and left him his tools. He got into milling after realizing how expensive lumber is and thought it would be more cost effective to mill his own.

He started with a Granberg Alaskan Chainsaw Mill and a Craftsman chainsaw. He destroyed the chainsaw on his first log and upgraded to a Stihl MS660 with a 36" bar.

His next upgrade was with a friend to an old Belsaw Circle Mill which was difficult to operate on a part time basis due to maintenance and up-keep.

He purchased the Woodmizer LT15Wide in November 2018. This gives him the ability to mill logs up to 36" in diameter and 17' 8" long. It's powered by a 25HP Kohler gas engine and has no frills – it's all manual.



The bandsaw on the Woodmizer operates very much like a regular bandsaw except the parts are much larger. You have wheels, blade guides, a blade tension lever and a tension knob. Water is used to lubricate the blade and prevent pitch build-up. Lloyd mixes in a small amount of dish soap to help remove the pitch.

The carriage is operated with a hand crank to advance or return the saw carriage and the head is raised and lowered with a notched disc. Each notch is 1/16" and a full turn is 2".



This shows Lloyd hard at work milling a log.

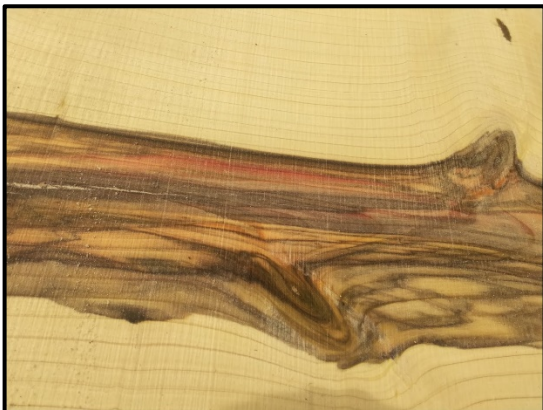


There is a second cut gauge that shows cuts in increments of $4/4$, $5/4$, $6/4$ and $8/4$. The gauge takes into account the $1/8$ " blade kerf.



To augment his operation, Lloyd is building this solar kiln based on a Virginia Tech design. He is mounting it on a trailer for greater mobility.

Here's a couple of photos of some of the really cool logs Lloyd has milled.



Dallas Makerspace

The second part of the program was presented by Kris Anderson the president of the Dallas Makerspace which is actually in Carrollton. Kris explained how MS is set up and how it functions.

There are 27 committees operating within the 501c(3) nonprofit structure made up of 200 active core members. All are volunteer members who pay \$60/month to use the facility. Retirees pay \$40/month. Only the contract bookkeeper, housekeeping and tax preparation are paid.

The focus of MS is to teach the public about the different disciplines such as woodworking, laser (the largest committee), metal, machine shop and Forge.

There are a total of 2200 members working in 36,000 square feet of space 24/7. Kris says that the wait times to get on a machine vary by day and hour with most waits less than 30 minutes. The exception is the lasers which can stretch to over a couple of hours.

If you're interested in checking out the Dallas MS, you can take a free tour on Thursday evenings at 7:00pm. It is located at 1825 Monetary Lane, Suite 104 in Carrollton which is on the west side of 35 near 635 and Valwood.



North Texas Woodworkers Association

See us at: www.ntwa.org

Volume 28, Number 3

Newsletter

March 2019

Next club meeting:

Tues., April 16th

7:00 pm at the

Party Barn

***Program: Club
member Larry
Maughan will
provide a live lathe
demonstration on
the patio (weather
permitting (see
following writeup)***

Club member Larry Maughan, turner extraordinaire, will show off his turning skills at the April club meeting. We'll start the meeting outside on the patio to take advantage of the daylight before we go inside to finish his program. Once inside, Larry will add details of what you just saw and will pass around pieces illustrating the points he is making.

When Larry's program is wrapped up, we'll pick up the normal program with intros, questions, show and tell and raffles.

Newsletter edited by: Joe Polich
newsletters@ntwa.org

Pictures by: Sidney Futrell