

Welcome



President Jay Stearns welcomed everyone to the April meeting with a BIG announcement: **we go live at the Party Barn in May** after a 15 month hiatus!

The Party Barn will be open for our club meeting May 18th. And yes, we will finally judge the **birdhouse** build challenge that has been delayed since March 2020. See details on page 13.

If you're unable to bring in your birdhouse because it is occupied, bring in several pictures for the judging.

Masks will be optional, but you will be required to wear a mask when mixing with other members such as the judging of the birdhouses.

Seating at each table will be limited to 3-4 and no mixing of masks/no masks. The reason for masks is not necessarily to protect you, but to protect others in the event you are a carrier. **There will be no exceptions to this.** Direct any questions to President Jay Stearns at president@ntwa.org or Vice President Steve Yauch at vicepresident@ntwa.org or any other officer listed on the Contact Us page on our website: www.ntwa.org.

We will attempt to Zoom this meeting as well, but no promises on quality.

Announcements

Dues are due. See details on the front page of the March newsletter or go to the Club Information page on our website. Dues payment info is at the bottom of the page.

Kelly Geer said there is a wood-worker meetup May 29th at 6:00pm at the VFW in Garland. There will be a raffle to benefit a local maker who has had unexpected medical bills. It is a good opportunity to meet other woodworkers and makers not familiar with NTWA. Kelly will post it on the NTWA Facebook page and send it to Joe for the newsletter.

Texas Maker Meet Up Benefit



- Food
- Raffle
- Friendship

**SAT MAY 29th
6:00 PM
VFW- Garland
2180 Meridian Way
Garland, TX 75040**

TEXAS
MAKERS!!!!
Mark your
calendars
for May
29th at 6:00
PM for a
"Texas
Maker Meet-
Up Benefit."

This event
will help to

raise money for one of our own,
Nuthouse Sawmill, for unexpected
medical expenses. There will be a lot
of great companies who are donating
items for the raffle!

Raffle tickets will be \$10 each
(unlimited purchase). Each winner
will be allowed to pick from all the
items available until all items have
been claimed!

Feel free to share this event with
other Texas makers!

RSVP to @jpmwoodwork on
Instagram/Facebook OR email
JPMwoodwork@gmail.com.

For more info or to donate an item to
the raffle contact @jpmwoodwork OR
@lone_star_woodworks on
Facebook/Instagram OR email
JPMwoodwork@gmail.com.

Location:
VFW- Garland
2180 Meridian Way
Garland, TX 75040

Wendell Brough asked if we could do
a treasurer report to the full club
citing that finances might indicate
that we could pay some speakers or
at least expenses. Steve Yauch
suggested doing it quarterly.

Election of Officers

Vice President Steve Yauch asked if
there were any volunteers for any of
the elected offices. Hearing none,
Wendell Brough made the motion to
accept the slate of candidates as
presented in an email, seconded by
Bill Moore. Motion passed.

See our website for a full list of
officers and other appointed
positions: [https://ntwa.org/club-
information/contact-us-2](https://ntwa.org/club-information/contact-us-2).

Jim Cadorette suggested doing a
program on geometry as it pertains
woodworking. Wendell suggested
Gary K(?) who did this about 7-10
years ago. Steve thought it was Lynn
Floyd. Neal will be asked to check
into this.

Shop Questions

Bodie Pyndus asked about a
preferred finish for a pecan bar top.
He prefers it still look like wood. Kyle
and Kelly both suggested epoxy and
Steve suggested Bar Top Finish.
Bodie doesn't want it to look like
plastic. Kelly said that if you keep the
epoxy thin, it will not have that
"plastic" look. Bill Moore suggested
catalyzed lacquer which is impervious

to water and alcohol. Mohawk is the brand Bill recommends, but other brands have it as well. Sidney Futrell suggested wipe on poly, but you'll need more coats. Rockhard Table Top finish is available at Rockler and other outlets.

Dale Smith asked for advice on putting juice grooves in cutting boards. Bodie suggested watching a video on Kings Fine Woodworking.

Dale also asked about finish for cutting boards. Mineral oil mixed with wax was the most common recommendation.

Bill Moore asked for advice on HVLP spray guns. Kyle suggested Devilbiss which runs about \$200 on Amazon for just the gun. Bill is looking for a system because his compressor isn't large enough to run a gun. Steve suggested Rockler and Joe suggested Earlex.

Product Reviews

Dan Nilius finally got a Dremel tool; #8220 and says he doesn't understand how he ever got along with it. It is cordless and he says the battery life is pretty good. He keeps finding more and more uses for it. The Dremel itself was \$90 and an accessory kit was another \$20. Gary Turman said Walmart is a good source for the accessories at reasonable prices.



(Dan's new 8820 Dremel)

Program/ Show & Tell

Homemade tools was kicked off by Neal Pappion. His first was a turned chisel mallet out of canary wood.



Neal next showed off two lathe tools he made from 5/8" square stock he bought online and turned the handles. He made one with a round insert and one with a square insert.

He had to grind the ends at an angle and drill and tap the holes for mounting the inserts. He then tempered the ends to harden them.



Club members Kelly and Caleb Geer of Urban Tree Merchants demonstrated some of the equipment Caleb modified for milling and leveling slabs and walked us through the process Caleb uses to slab a log.



His mill can square a 40" long and slab 36 1/2" width and up to 16' in length.



This is a rather large bodark log Caleb just cut.



Caleb designed this upright bandsaw mill. It can do up to 18" diameter logs.



Caleb says he can do 50" x 10' slabs but can go longer by reversing the slab end for end. The cost of flattening a slab is \$120/hour. The time varies by the type, size and hardness of the wood. Flatness is within .100".

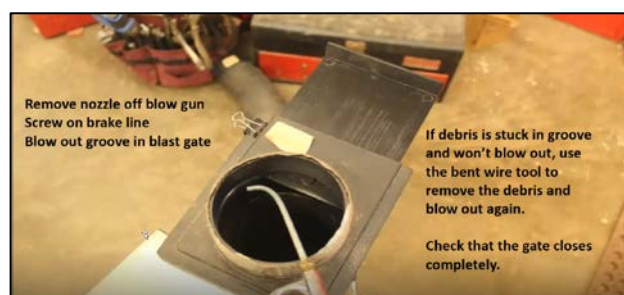
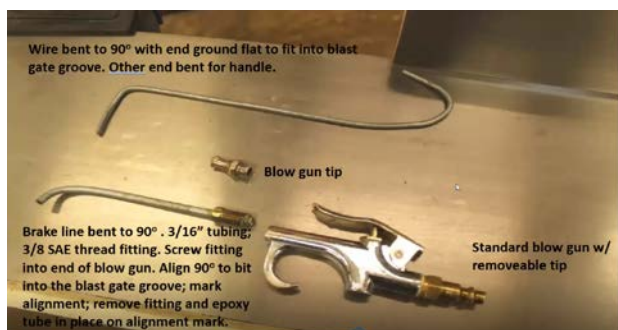
Bodie Pyndus made this mallet out of red oak and accented with walnut. He says the key to a good mallet is the contouring of the handle to give you a good grip so the mallet won't slip out of your hand. He shaped the handle with a spokeshave and sandpaper.



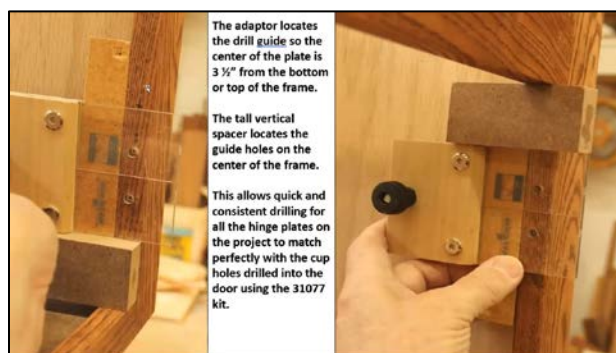
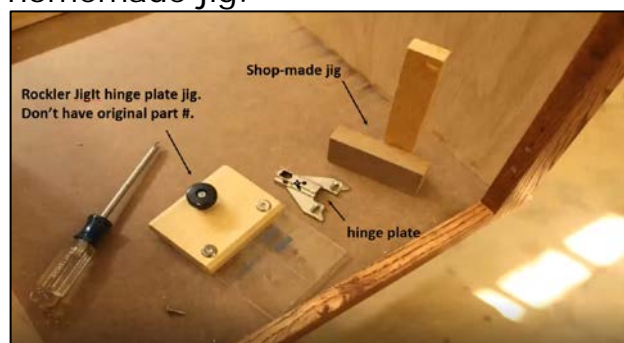
The slab leveling machine Caleb built.



Joe Polich made these tools to clean out the groove in his blast gates. Brake line tubing is threaded on the end of a standard blow gun to reach into the groove to blast away collected sawdust. If larger pieces get lodged in the groove, the bent wire digs them out. See the comments within each picture for details on how he made them.



Joe's second homemade jig is for installing hinge plates for hidden hinges on the face frame. Note: this Rockler hinge plate jig is no longer available, but they have a number of new ones that don't require this homemade jig.



Steve Rogers made this dual-purpose stand to add a drum sander to his tool collection. When he and his wife moved into their current house his wife made a deal with him that he could have as many tools as he wanted so long as both cars would fit in the garage every night. By flipping the planer Steve has access to his new drum sander!





Job well done Steve!

This is another Beads of Courage box that Steve has sent off to Bodie for distribution. The box is made of walnut and mesquite.



Charlie Barnes made this simple v-block to knock the corners off pen blanks before he turns them on his lathe. He glued sandpaper in the V to keep the pen blank from sliding around. This jig lets Charlie keep the blade at 90°. Charlie made a special L-shaped push stick with a V-groove in the bottom to lock the pen blank

into the V-block. The L-shape prevents the blade from pushing the blank out of the block and to safely push the blank and jig through the blade. And no, the pen blank came red, it was not from blood before he came up with his special push stick!



Dale Smith has been making boxes. This is a box tools were shipped in that he created this beautiful new lid for.



This is an apple wood box with a cherry lid. The butterfly

inlay was made from wisteria vine.

This box is made from a dark wood Dale had on hand and the lid is mesquite accented with ribbons of purpleheart. He used hidden hinges with a pin for the pivot.



This box has a sliding lid and is made of padauk and hard maple.



This is a mesquite box with natural edges.



Walnut and Cherry



Walnut, Hard Maple, etc

Dale then switched his talents over to cutting boards.

Back to boxes. Dale made this one for the ashes of his granddaughter's cat.



Cherry, Hard Maple and Cedar inlay

After seeing Sunny's box, Dale's son-in-law asked him to make one for his mother's ashes. It is made from mesquite with a purpleheart cross.



Mesquite with
Purpleheart cross

Dan Nilus turned this bowl with scraps imbedded in the resin.



Dan's used burr oak for his next project, a bowl stand for his granddaughter's dog Jade. Notice the dog's name on the end. Dan used his newly acquired Dremel to carve the name.



Dan turns these 2- or 3-piece canisters out of logs he acquires from a variety of sources. This particular one has two cans with the upper can acting as the lid for the lower can. Notice Dan's trademark resin inlays.



Jay copied this push stick design from Kyle's walnut push stick. Jay made his out of quilted maple and decided it was too pretty to use so it just hangs on the wall of his shop. So... he made a couple out of MDF that can get beat up without causing grief.



Jay uses this octagonal jig to glue up blanks for making mugs.



Brian O'Donnell made this stand for his miter saw about 18 years ago and decided to upgrade it a more useful stand. His new stand has casters plus wings that can be raised to support longer pieces of stock.

The wing supports have adjustment bolts to align the wings with the miter saw table as necessary.



Brian also made this easel for his grandniece. There is a roll of paper in the middle of the easel that pulls down on one side and is

secured with cleats at the top and bottom. The other side is a white board that the kids can draw on.



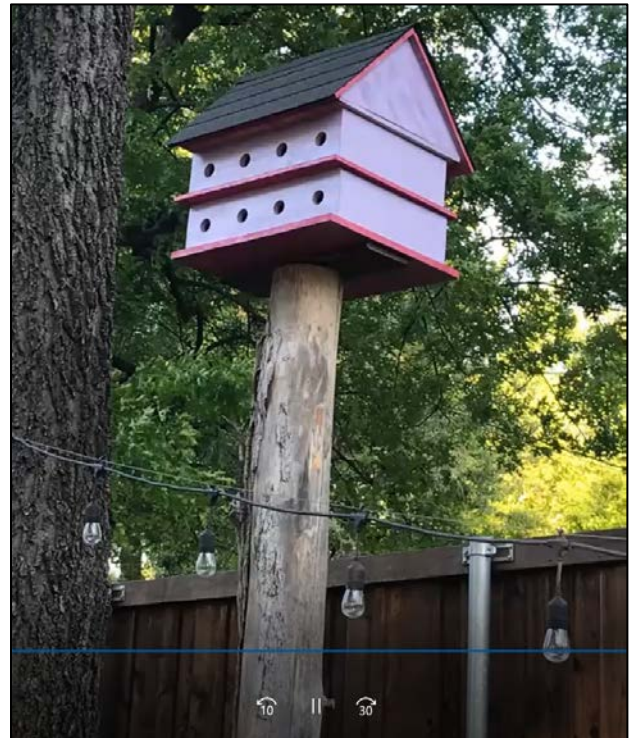
Brian used a panel with chalk board on one side and white board on the other.

Kelly Geer added that you can buy dry erase material that comes in a roll and has a sticky back.

Sidney Futrell made this screen out of red oak to cover his stereo equipment. He was tired of the led lights shining in his face. The board has half lap joints in the corners and for the cross braces. He put a groove on the back of the frame for $\frac{1}{4}$ " dowels to hold the grill cloth in place and to make it tight and wrinkle free. This allows him to secure the cloth without any mechanical fasteners such as tacks.



Swede Hanson made this birdhouse or as his daughter calls it, a fairy house. Paint is courtesy of his daughter and it was put up in time to welcome some guests from South America.



Mark Blacketer shared information about a Fein Multimaster Cast Saw. He says this saw cuts using oscillations (vibrations) instead of a rotating action like typical circular saws. It is ideal for cutting small parts and close detail. It was originally designed for cutting off orthopedic casts. (this picture may not be Mark's exact model).



J.W. Hoover made this tissue box cover out of walnut for a friend's wife.

Gary Turman showed off his "dumb son," a roller stand that he uses when his real son is unavailable to help cut sheet goods on the table saw. The stand adjusts as high as 42" so it works on any tool table such as the table saw, drill press, bandsaw, etc. He used ball rollers so alignment isn't as critical as with a single roller. It is designed so the roller top stays centered on the foot-print of the base regardless of how high you adjust it.



Kelly Geer shared this 16" x 22" charcuterie board they made using cedar and purple epoxy. Mica powder was added to the epoxy to give it that iridescence look.





North Texas Woodworkers Association

See us at: www.ntwa.org

Volume 30, Number 4

Newsletter

April 2021

Birdhouse Judging

Remember, your birdhouse is not to exceed 24" x 24" x 24".

Judging: Upon arrivals, entries will be assigned a number and then placed in a common area for viewing.

During the break members will judge entries based on complexity/ uniqueness, originality/creativity, and craftsmanship.

Each category could receive a score between 1 to 5, allowing a maximum total score of 15.

After judging members will present and discuss their entry.

Cash prizes will be awarded for the top three: \$50 for 1st; \$35 for 2nd; and \$25 for 3rd.

***Our next meeting is
Tuesday, May 18th at
7:00pm at the Party
Barn and via Zoom.***

***WATCH for Zoom
connection details
soon!***

***Program: Birdhouse
judging!***

***If time permits, there
will be Show & Tell***

Newsletter edited by: Joe Polich
newsletter@ntwa.org